



NEGRI BOSSI

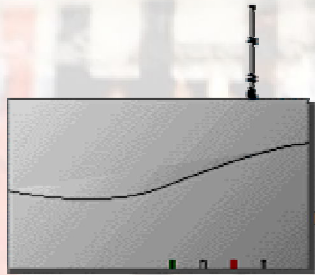
NEGRIBOSSI

a M I C O
NEGRIBOSSI NETWORK

Amico

NEGRIBOSSI NETWORK

Local Server Computer Kit



Access Point

- Pentium PC
- Ethernet Port
- High speed modem
- Microsoft Windows
- Access Point
- PC Anywhere Software
- Negri Bossi AMICO Software
- Negri Bossi Supervision 2004 Software



Local Server PC

NEGRI BOSSI

a M I C O

NEGRIBOSSI NETWORK

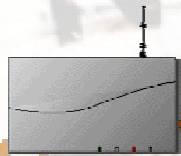


**AMICO DESKTOP PC COMPUTER
FOR LOCAL SERVER**

NEGRI BOSSI

a M I C O

NEGRIBOSSI NETWORK



Access Point



Local Server PC

WIRELESS Communication - Patented by Negri Bossi



NEGRI BOSSI CALL CENTER

NEGRI BOSSI

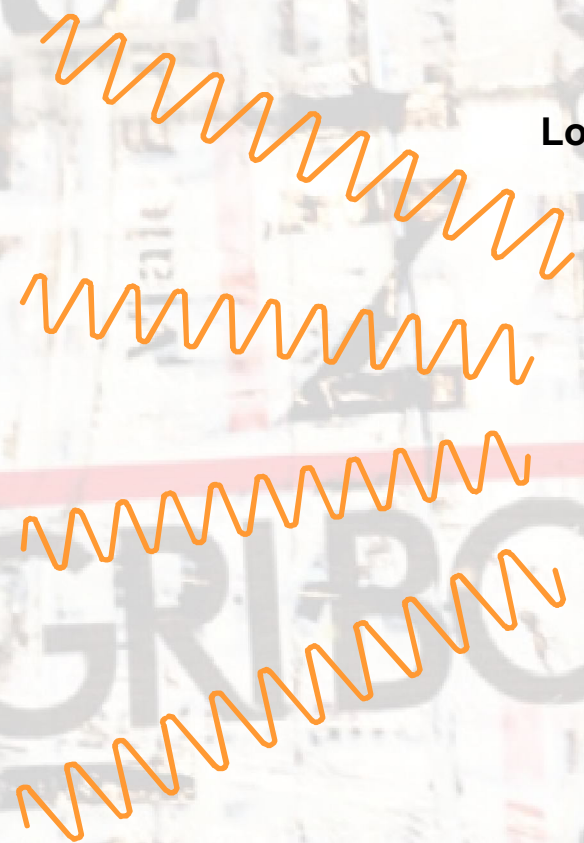


Machines equipped with
(wireless Ethernet interface)

a M I C O

NEGRIBOSSI NETWORK

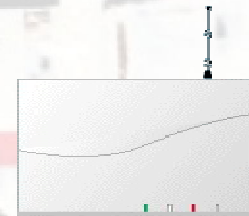
CUSTOMER PLANT



LAN

Local Area Network

Local Server PC



Access Point



NEGRIBOSSI

a M I C O

NEGRIBOSSI NETWORK

Remote Diagnostics

- Full machine remote control
- Real time machine and component monitoring
- Verification of the machine status during an alarm
- Modification of the machine setting parameters
- CAN components setting / tuning
- Modification of the machines configuration files
- Remote calibration
- Knowledge base
- Software updating / upgrading

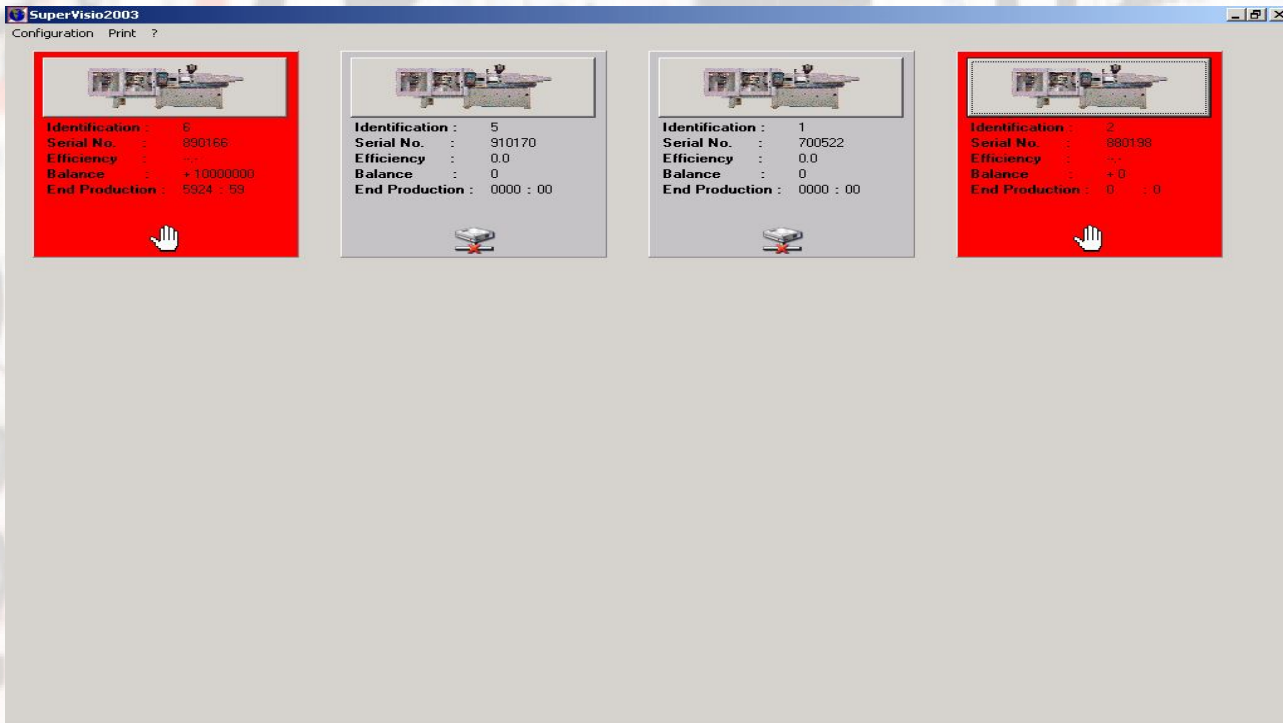
NEGRI BOSSI

AMICO Supervision Software

- Plant-wide Machine Status
- Production Control Information
- Down Time Reasons / Part Reject Faults
- Machine Alarm Tracking
- Full Part Trace / Process Trending
- Cycle to Cycle SPC Data
- Machine Efficiency Data

a M I C O
NEGRIBOSSI NETWORK

NEGRI BOSSI



a M I C O

NEGRIBOSSO NETWORK

AMICO Super Vision 2003 Software

NEGRIBOSSO

Machine Serial No. 890166

EXCEEDED CYCLE CONTROL TIME 2004-11-10 13:1:16

Job Set | Trend | Last Cycle | Alarms

Part Number

Work Order Number

Mould Number

Mould Description

Material Type

Shot Weight gr

Number of Cavities Nr

Order Quantity Nr

Standard Cycle Time sec

Message

Send Data Send Message New Job Request Send New Job

Print Exit

MOTOR : OFF MACHINE STATUS : Manual ALARM : OFF OPERATOR CODE : DAVE MOULD NAME : C-216

a M I C O

NEGRIBOSSI NETWORK

Machine Serial No. 890166

EXCEEDED CYCLE CONTROL TIME 2004-11-10 13:1:16

Job Set | Trend | Last Cycle | Alarms

	Actual Cycle Counter	Cycle Time	Melt Temperature	Mould Temperature - M	Mould Temperature - F	Filling Time	Plasticising
min	-----	-----	-----	-----	-----	-----	-----
Max	-----	-----	-----	-----	-----	-----	-----

Esporta Exit

MOTOR : OFF MACHINE STATUS : Manual ALARM : OFF OPERATOR CODE : DAVE MOULD NAME : C-216

AMICO Super Vision 2003 Software

NEGRIBOSSI

Machine Serial No. 890166

EXCEEDED CYCLE CONTROL TIME 2004-11-10 13:1:16

Job Set | Trend | Last Cycle | Alarms

	Actual Cycle Counter	Cycle Time	Melt Temperature	Mould Temperature - M	Mould Temperature - F	Filling Time	Plasticising
min	-----	-----	-----	-----	-----	-----	-----
Max	-----	-----	-----	-----	-----	-----	-----

Esporta File

C:\

Data Files (*.dat)

VIRTPART.DAT

Nome File:

*.dat

Ok Cancel

Esporta Exit

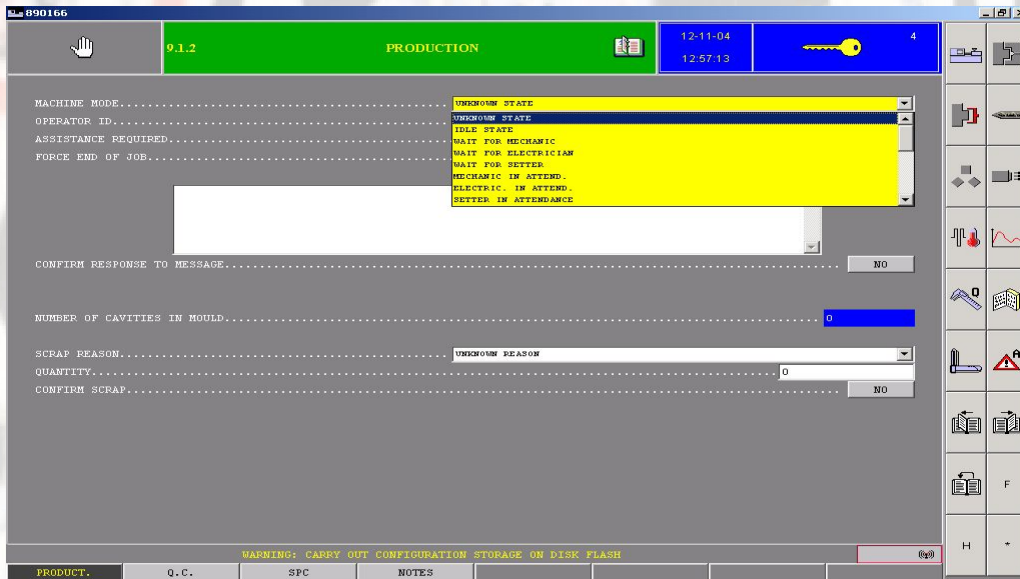
MOTOR : OFF MACHINE STATUS : Manual ALARM : OFF OPERATOR CODE : DAVE MOULD NAME : C-216

a M I C O

NEGRIBOSSI NETWORK

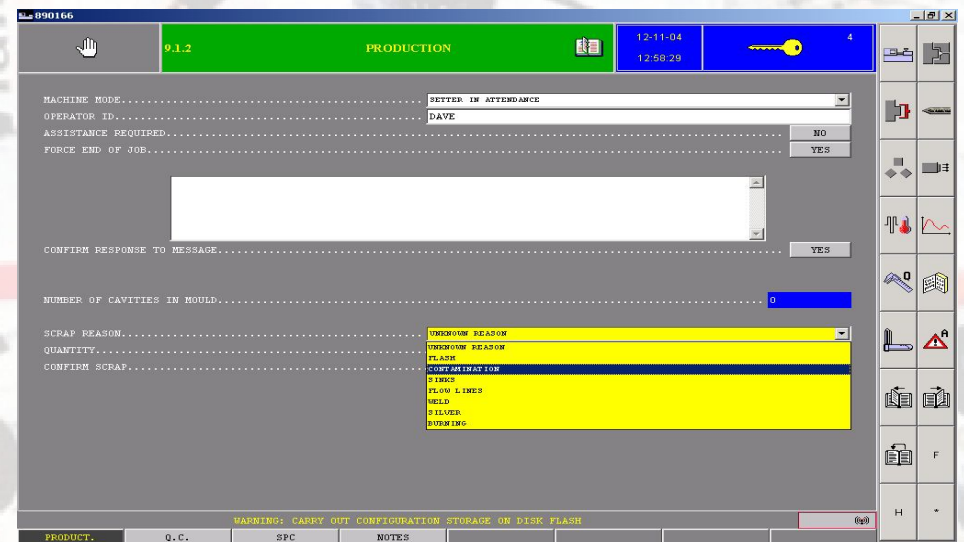
AMICO Super Vision 2003 Software

NEGRIBOSSI



a M I C O

NEGRIBOSSE NETWORK



AMICO Super Vision 2003 Software

NEGRI BOSSI

Machine Serial No. 890166

EXCEEDED CYCLE CONTROL TIME 2004-11-10 13:1:16

Job Set | Trend | Last Cycle | Alarms

Actual Cycle Counter	Nr	----	Cycle Time	sec	----	Reject Parts			
Melt Temperature	°F	----	Efficiency	%	----	Unknown Reason	Nr	----	
Mould Temperature - M.P.	°F	----	Parts Counter	Nr	----	Flash	Nr	----	
Mould Temperature - F.P.	°F	----	Average Cycle Time	sec	----	Contamination	Nr	----	
Filling Time	sec	----	Standard Cycle Time	sec	----	Sinks	Nr	----	
Plasticising Time	sec	----	Preselected Batch Quantity	Nr	----	Flow lines	Nr	----	
Max. Clamping Force	kN	----	Number of Cavities	Nr	----	Weld	Nr	----	
Cushion Position	inch	----				Silver	Nr	----	
Switchover Position	inch	----				Burning	Nr	----	
Plasticising Position	inch	----				Quality Control	Nr	----	
Max. Injection Speed	inch/sec	----				Start of Cycle	Nr	----	
Max. Screw Rotation Speed	rpm	----							
Mean Screw Rotation Speed	rpm	----							
Max. Injection Pressure	psi	----							
Switchover Pressure	psi	----							
Max. Back Pressure	psi	----							
Mean Back Pressure	psi	----							
Max. Cavity Pressure	psi	----							
Switchover Cavity Pressure	psi	----							

Print Exit

MOTOR : OFF MACHINE STATUS : Manual ALARM : OFF OPERATOR CODE : DAVE MOULD NAME : C-216

a M I C O

NEGRIBOSSI NETWORK

Machine Serial No. 890166

EXCEEDED CYCLE CONTROL TIME 2004-11-10 13:1:16

Job Set | Trend | Last Cycle | Alarms

No.	Date	Time	Shot No.	Status	Code	Description
1	2004-11-03	17:40:5	0	1	18	MISSING LUBRIFICATION: PRESSURE NOT REACHED
2	2004-11-03	17:41:52	0	0	18	MISSING LUBRIFICATION: PRESSURE NOT REACHED
1	2004-11-04	12:51:37	0	1	185	SERVER EUROMAP63 MESSAGE (to page 9.1.2)
2	2004-11-04	12:54:29	0	0	185	SERVER EUROMAP63 MESSAGE (to page 9.1.2)
1	2004-11-05	12:1:55	0	1	223	DEFECTIVE TRANSDUCER MELT PRESSURE
2	2004-11-05	12:2:40	0	0	223	DEFECTIVE TRANSDUCER MELT PRESSURE
3	2004-11-05	12:2:54	0	1	223	DEFECTIVE TRANSDUCER MELT PRESSURE
4	2004-11-05	12:4:6	0	0	223	DEFECTIVE TRANSDUCER MELT PRESSURE
1	2004-11-09	12:5:18	0	1	18	MISSING LUBRIFICATION: PRESSURE NOT REACHED
2	2004-11-09	12:5:20	0	0	18	MISSING LUBRIFICATION: PRESSURE NOT REACHED
3	2004-11-09	12:5:59	0	1	89	INCORRECT MOULD OPENING STROKES
4	2004-11-09	12:6:11	0	0	89	INCORRECT MOULD OPENING STROKES
5	2004-11-09	13:10:11	0	1	48	EXCEEDED CYCLE CONTROL TIME
6	2004-11-09	13:12:50	0	0	48	EXCEEDED CYCLE CONTROL TIME
1	2004-11-10	13:1:16	0	1	48	EXCEEDED CYCLE CONTROL TIME
2	2004-11-10	13:1:16	0	0	48	EXCEEDED CYCLE CONTROL TIME

Print Exit

MOTOR : OFF MACHINE STATUS : Manual ALARM : OFF OPERATOR CODE : DAVE MOULD NAME : C-216

AMICO Super Vision 2003 Software

NEGRIBOSSI